

Forestry



Wastewater & industrial discharges

Other point sources, i.e. landfills, quarries, contaminated sites

Agriculture

Wastewater from unsewered properties, i.e. septic tanks

Forestry

Dangerous substances

Physical changes to water bodies

Abstractions, e.g. for water supply



Wastewater & industrial discharges

Other point sources, i.e. landfills, quarries, contaminated sites

Agriculture

Wastewater from unsewered properties, i.e. septic tanks

Forestry

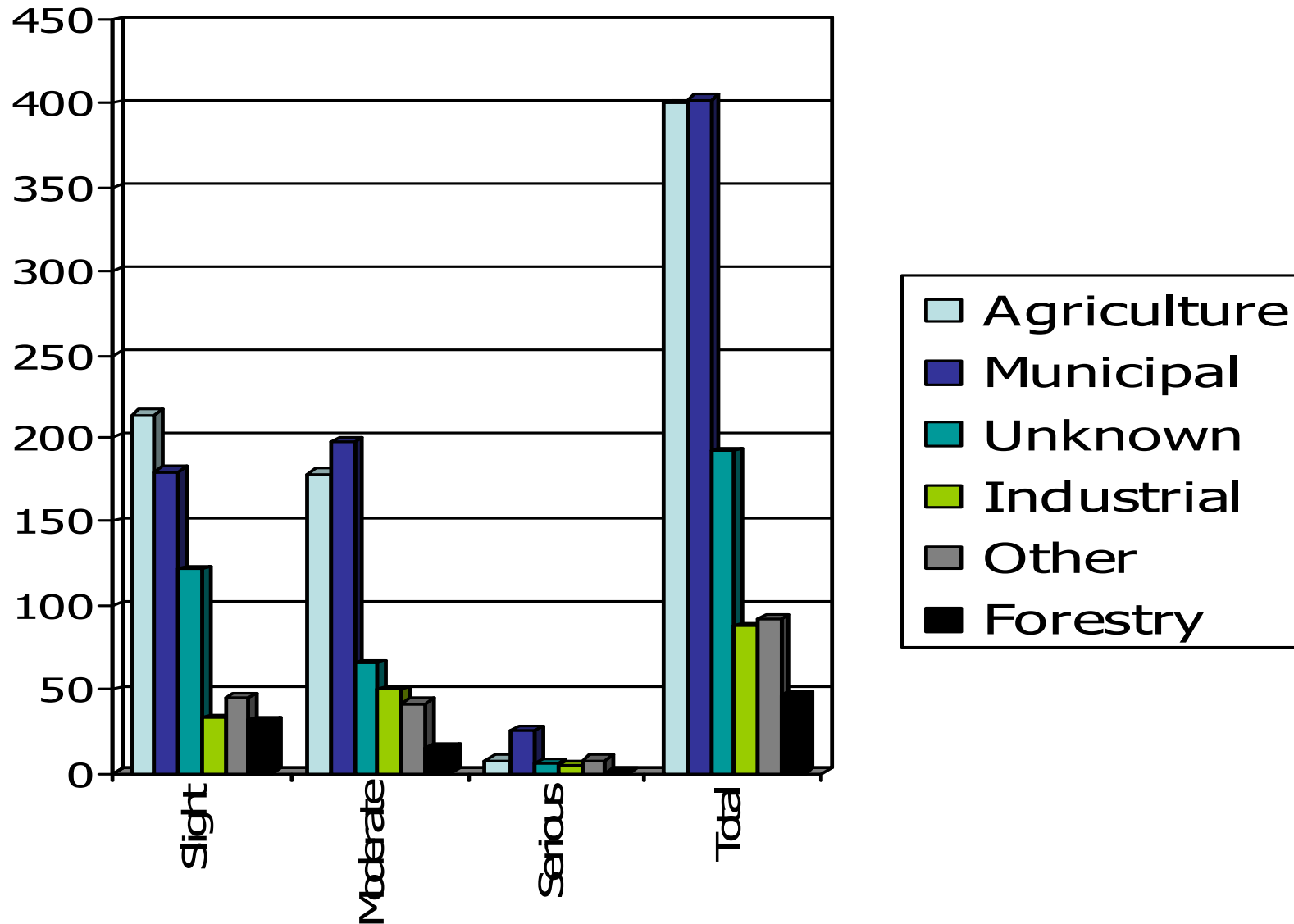
Dangerous substances

Physical changes to water bodies

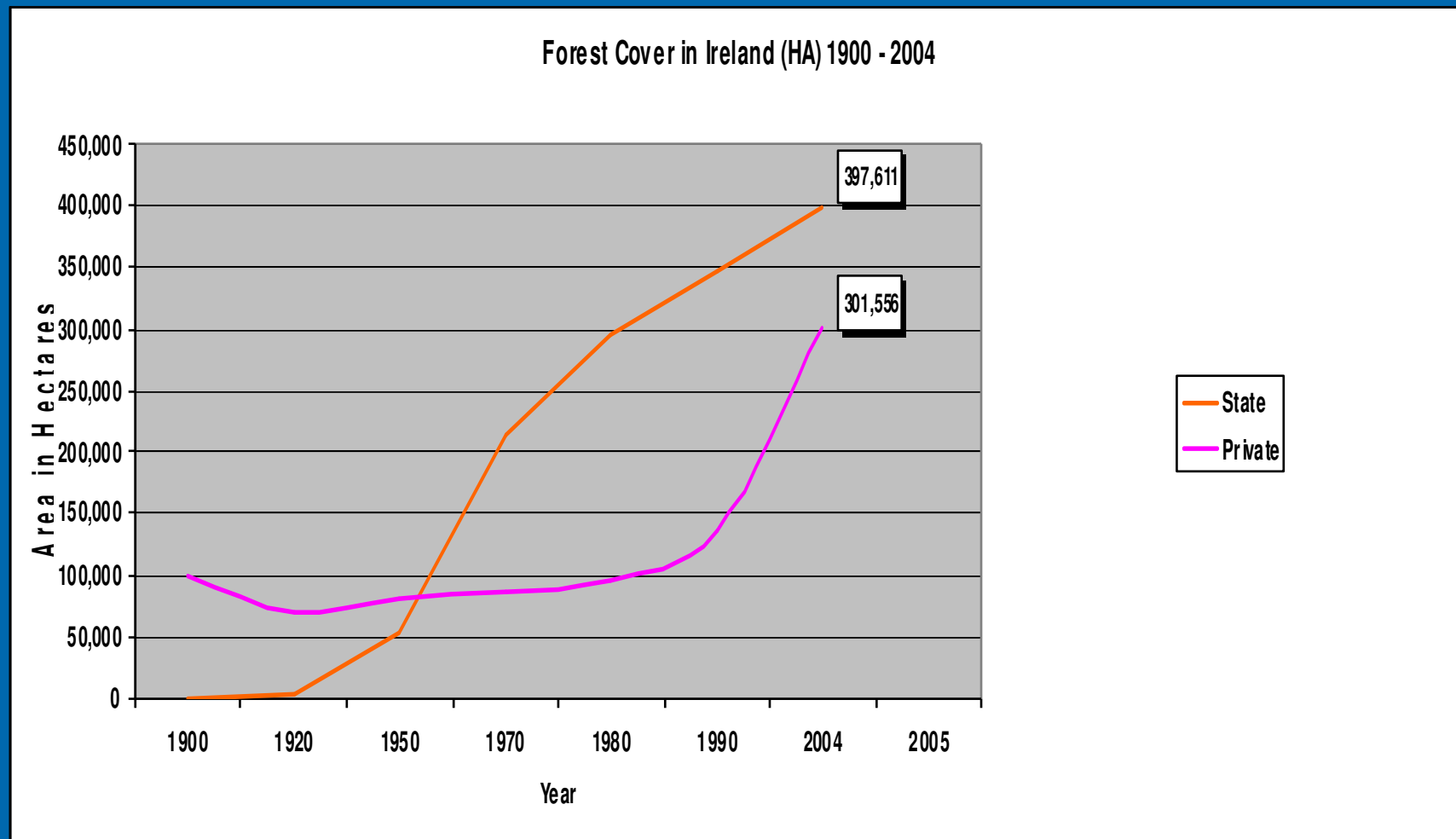
Abstractions, e.g. for water supply



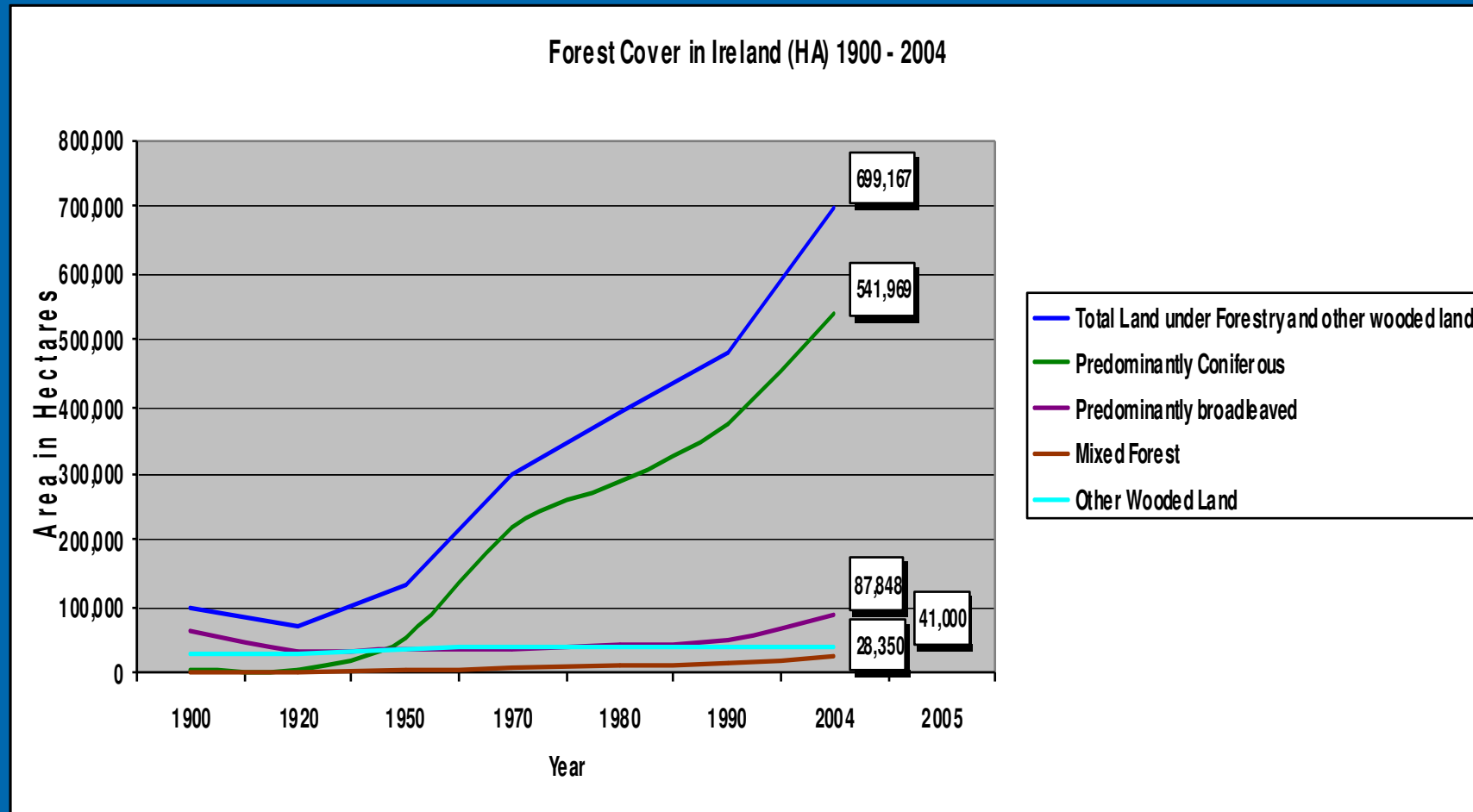
Activities Impacting on Water Quality



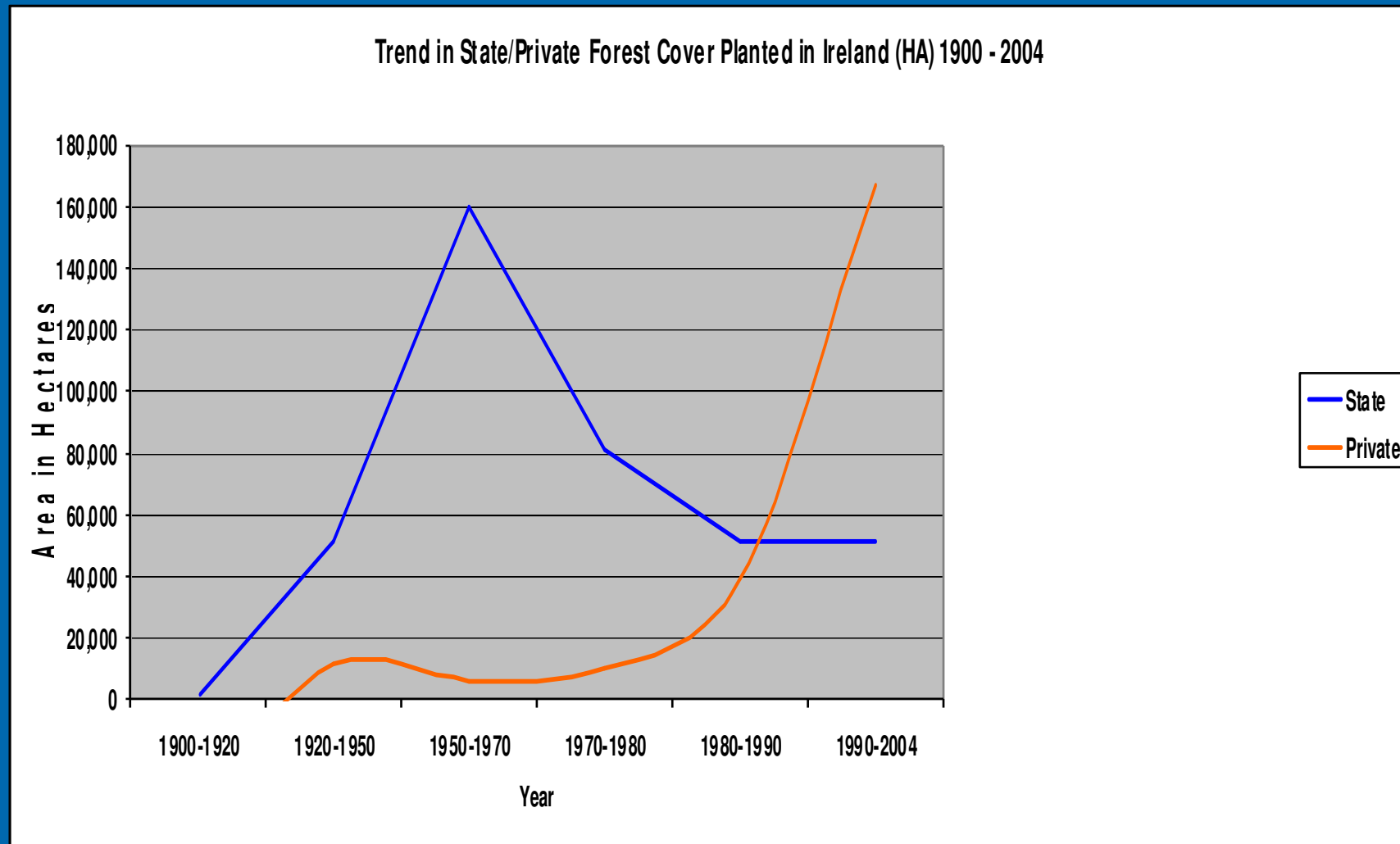
Forest Cover in Ireland (hectares) 1900 - 2004



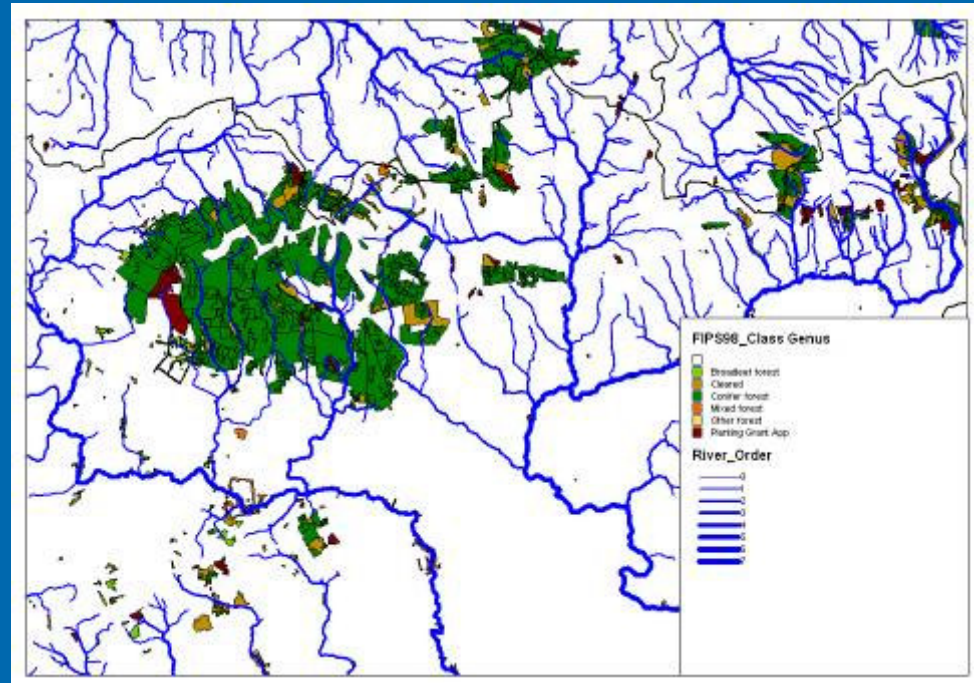
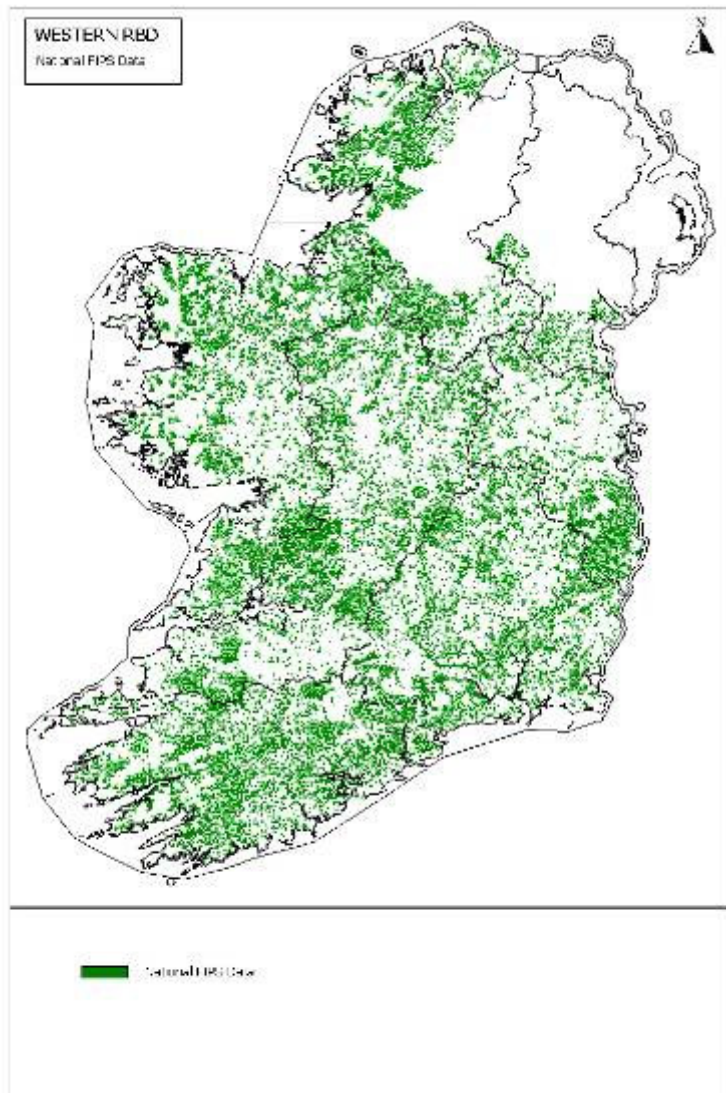
Forest Cover in Ireland (hectares) by Forest type



Trend in State vs. Private Forest Planting



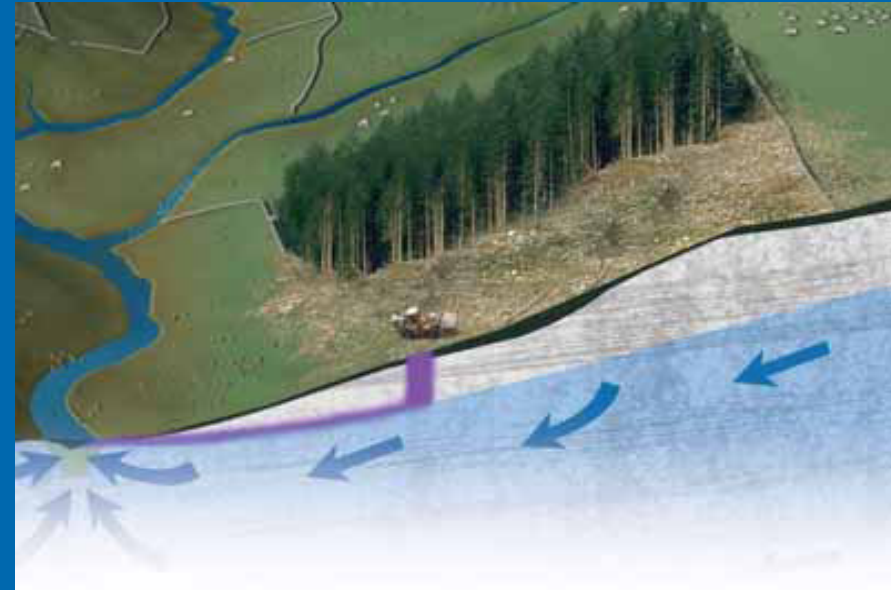
Pressure Layer - The Forest Inventory and Planning System 98



New FIPS 2006 in preparation by the Forest Service, DAF, Johnstown Castle

Potential Forestry Pressures

- Acidification
- Nutrient enrichment from
 - harvesting
 - Fertilisation
- Sediments from harvesting
- Pesticides used at planting



National Coordination Group

National Technical Coordination Group

Forest and Water Working Group

Western RBD
EPA
NPWS
CFB/Regional Fisheries
Local Authorities
Coillte
Forest Service
COFORD
RBDs
Marine Institute
Academic Expertise

Stakeholders

Regulators

Western RBD Project Team

Study Director

Study Manager

Study Team

Monitoring
Mapping
Database
GIS modelling

Peer Review

Forestry Research

- National study relating forests and forestry activity to water quality
- UCD – Acidification study
- UCC- Eutrophication and sedimentation study

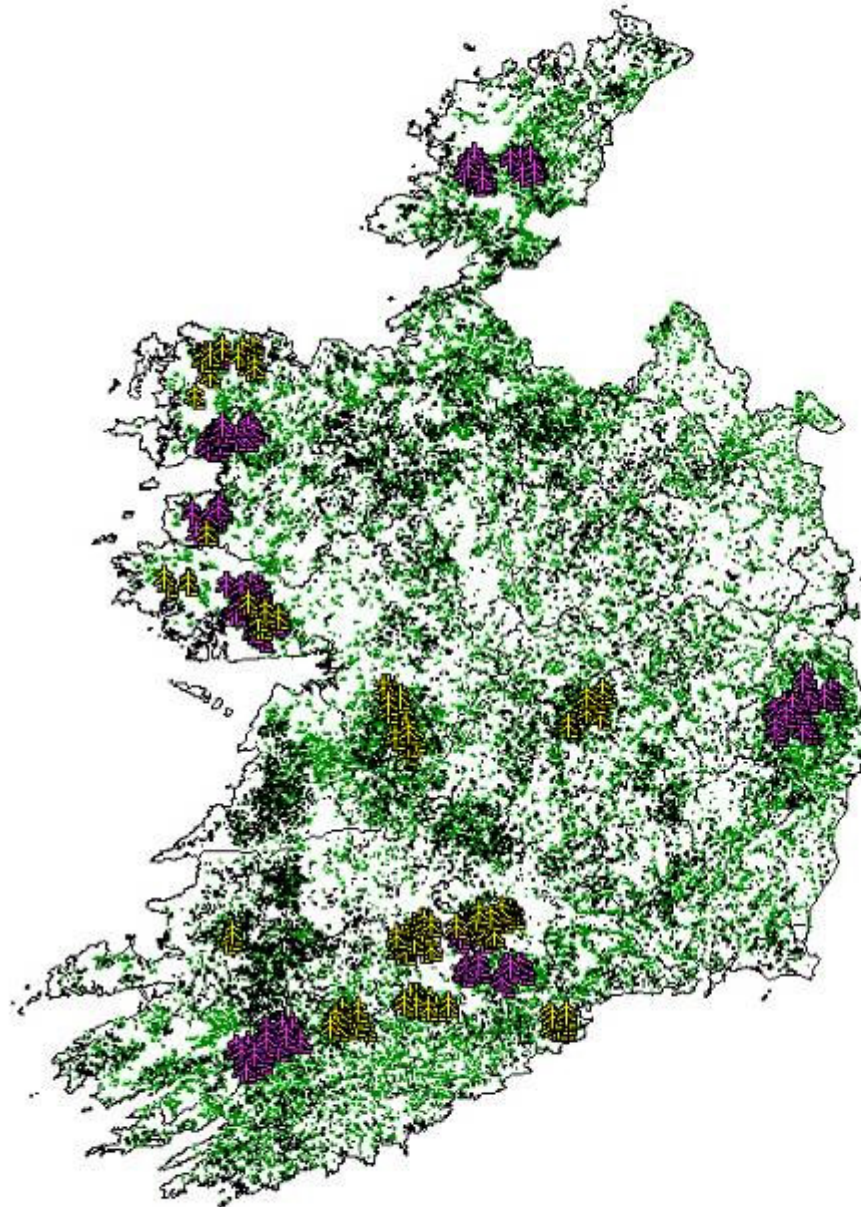


Forestry Study Approach

- 10% national Forest Cover
- Wide range of catchment types
 - Deep peat based
 - Peaty/mineral soils
 - Mineral soils
- Uses both forested and non forested catchments (controls)
- Acidification study – 250 sites
- Eutrophication/Sedimentation study 140 sites
- Chemistry, Macroinvertebrates, phytobenthos and fish



Study Areas in SWRBD



Eutrophication/Sedimentation Sites



Acidification sites



Counties



Forest Cover



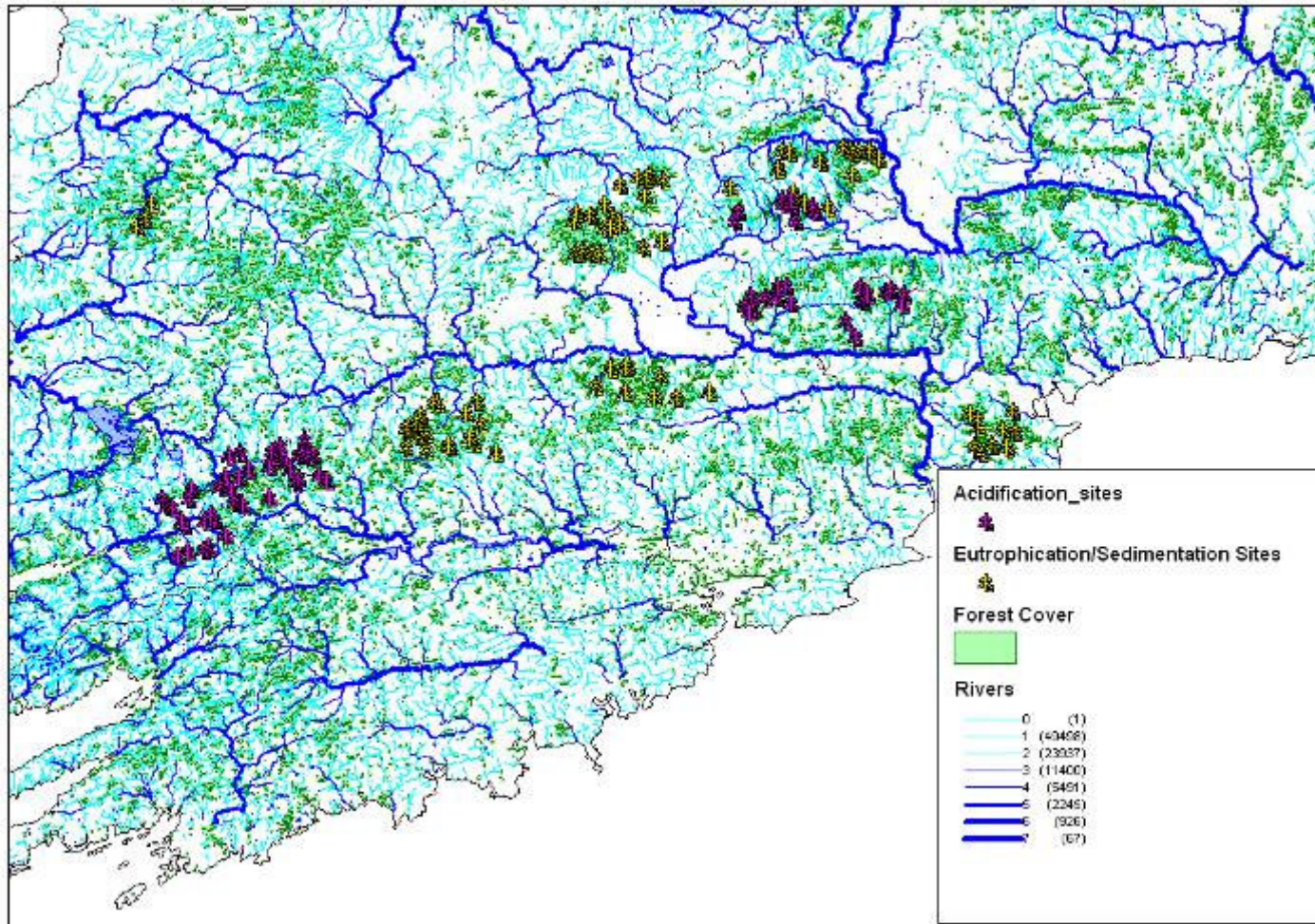
Region

Forest Cover



Region

Study Areas in SWRBD



Stakeholders affected: forestry sector – both publicly and privately owned as well as the associated saw-milling and processing industries

➤ ***SLIDES COURTESY OF THE WESTERN RIVER BASIN DISTRICT***



Existing Controls

- Tree felling is subject to Licence under the 1946 Forestry Act,
- Forest Service is implementing Sustainable Forest Management (SFM)
- Licensing regulations introduced in 2006 to control aerial fertilisation



Existing Controls

- Integrated Package of measures for practitioners
 - Irish National Forest Standard
 - Code of Best Forest Practice for all stages of forest management
 - Environmental guidelines
- Pesticides controlled by the Pesticide Control Unit of DAF



Additional Controls

Are existing controls adequate to meet WFD objectives?

- Existing legislation, binding environmental codes of practice and guidelines play a major role in protecting water quality in forested areas
- Revision of Forestry Act may be required
- New acid sensitive areas protocol required



Additional Controls

- What additional controls are proposed?
 - Establishment of riparian buffer zones in advance of harvesting
 - Introduce more stringent actions for the most sensitive areas (e.g. phased felling to limit nutrient input, prior establishment of buffer zones)
 - New plantations: strict adherence to statutory regulations, water protection guidelines and codes of practice (as amended by new acid sensitive areas maps)



Q7:

Forestry

What is your view about the suggested actions to control problems related to forestry within the South Western district?

Are these actions appropriate?

Have we missed something important?