

**Environment SPC
Cork County Council**

River Basin Management Planning

13th October 2008

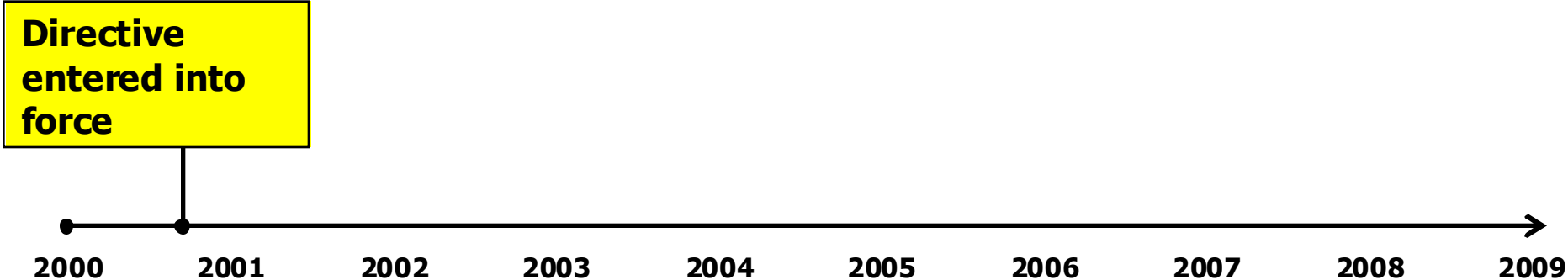
Seán Ó Breasail

- 1. Review of progress to date**
- 2. Strategic Environmental Assessment**
- 3. Overview of draft River Basin Management Plan**
- 4. Objectives of the Plan**
- 5. Post project arrangements**

Review of progress to date



The EU Water Framework Directive programme



Aims of the Directive

Ensure water in protected areas meets requirements.

Maintain “high status” of waters where it exists, preventing any deterioration in the existing status of waters.

Directive entered in force

2000

Achieve at least “good status” in all waters by 2015.

Progressively reduce chemical pollution

Eight Irish RBDs

Eastern RBD

South Eastern RBD

South Western RBD

Western RBD

Shannon IRBD

North Western IRBD

Neagh Bann IRBD

North Eastern RBD
(Northern Ireland)



Co-ordinating local authorities

Dublin City

Carlow

Cork County

Galway County

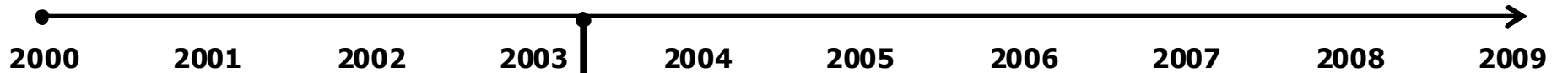
Limerick County

Donegal

Monaghan

(NI EHS)

Directive entered in force



Location and boundaries of RBDs identified
Competent authorities designated
Administrative provisions made

south western
river basin district



Directive entered into force

Water bodies identified and characterised and pressures and impacts analysed

Economic analysis of water use carried out

Register of protected areas issued

Location and boundaries of RBDs identified

Competent authorities designated

Administrative provisions made



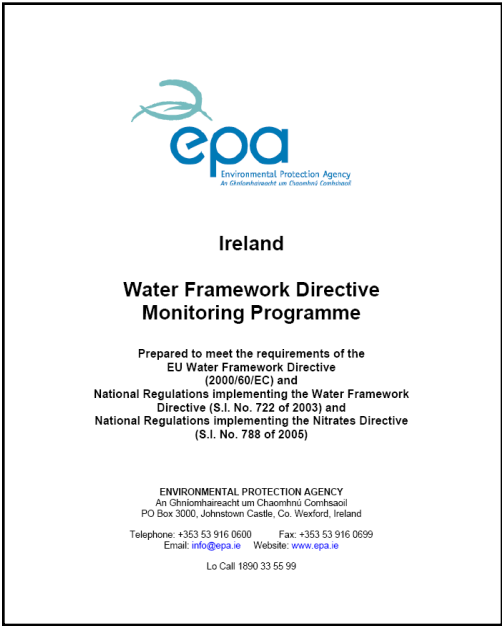
← SWRBD project →

2000 2001 2002 2003 2004 2005 2006 2007 2008 2009

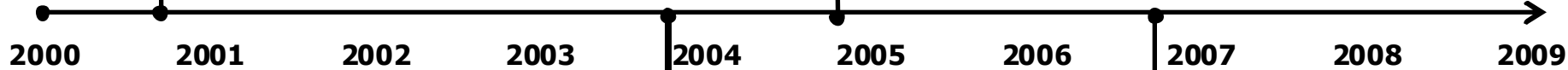


Directive entered into force

Water bodies identified and characterised and pressures and impacts analysed
Economic analysis of water use carried out
Register of protected areas issued

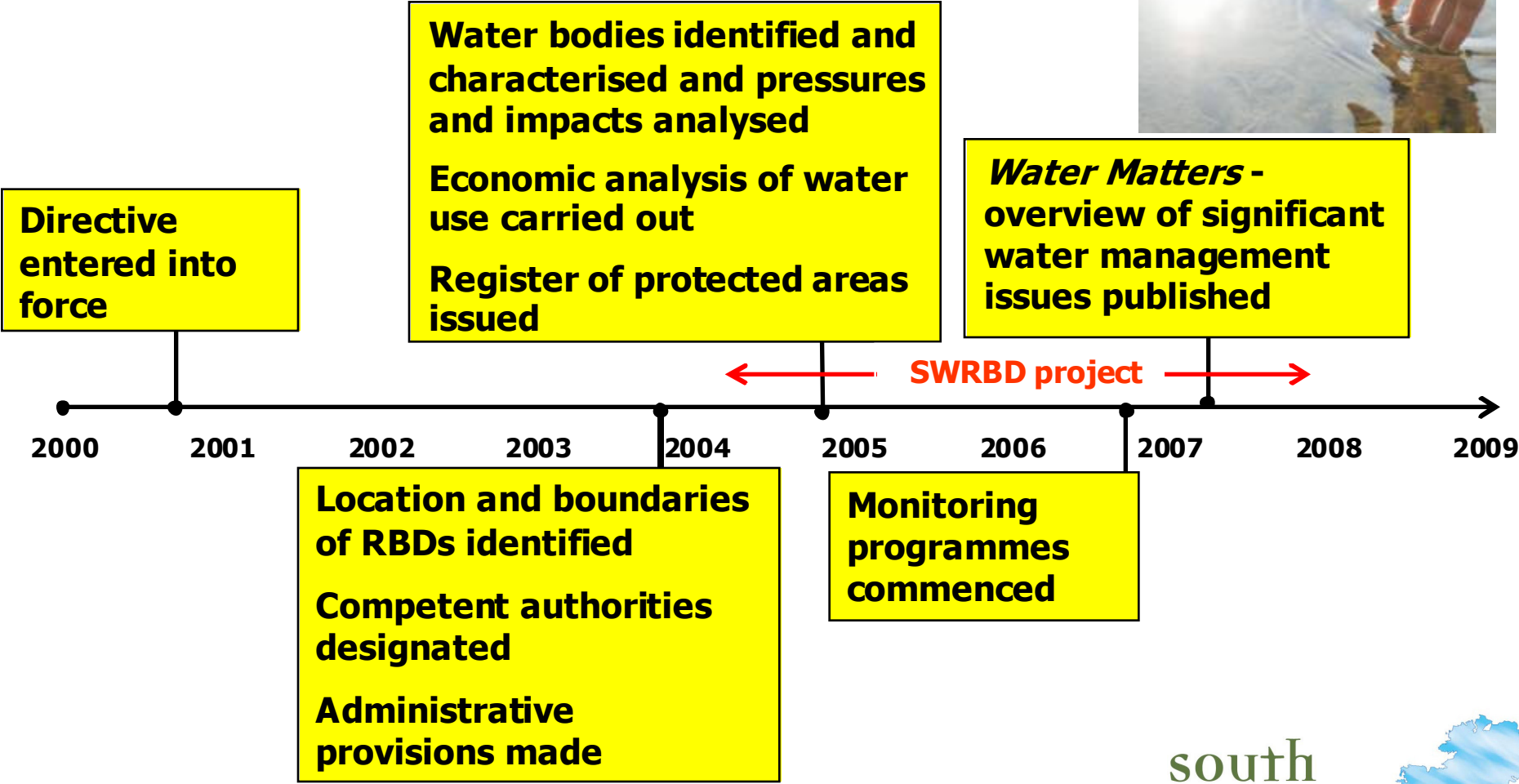


SWRBD project



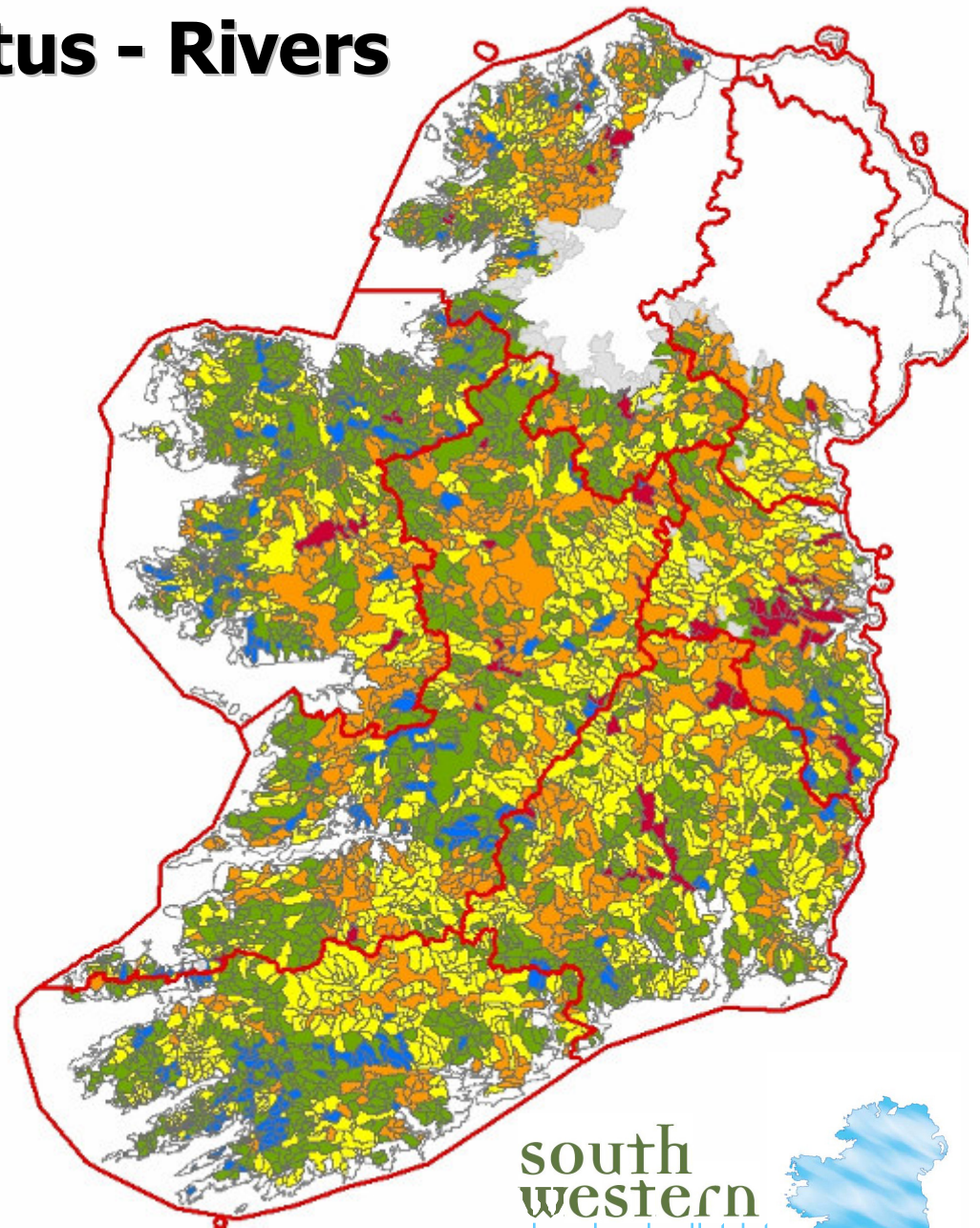
Location and boundaries of RBDs identified
Competent authorities designated
Administrative provisions made

Monitoring programmes commenced



National Ecological Status - Rivers

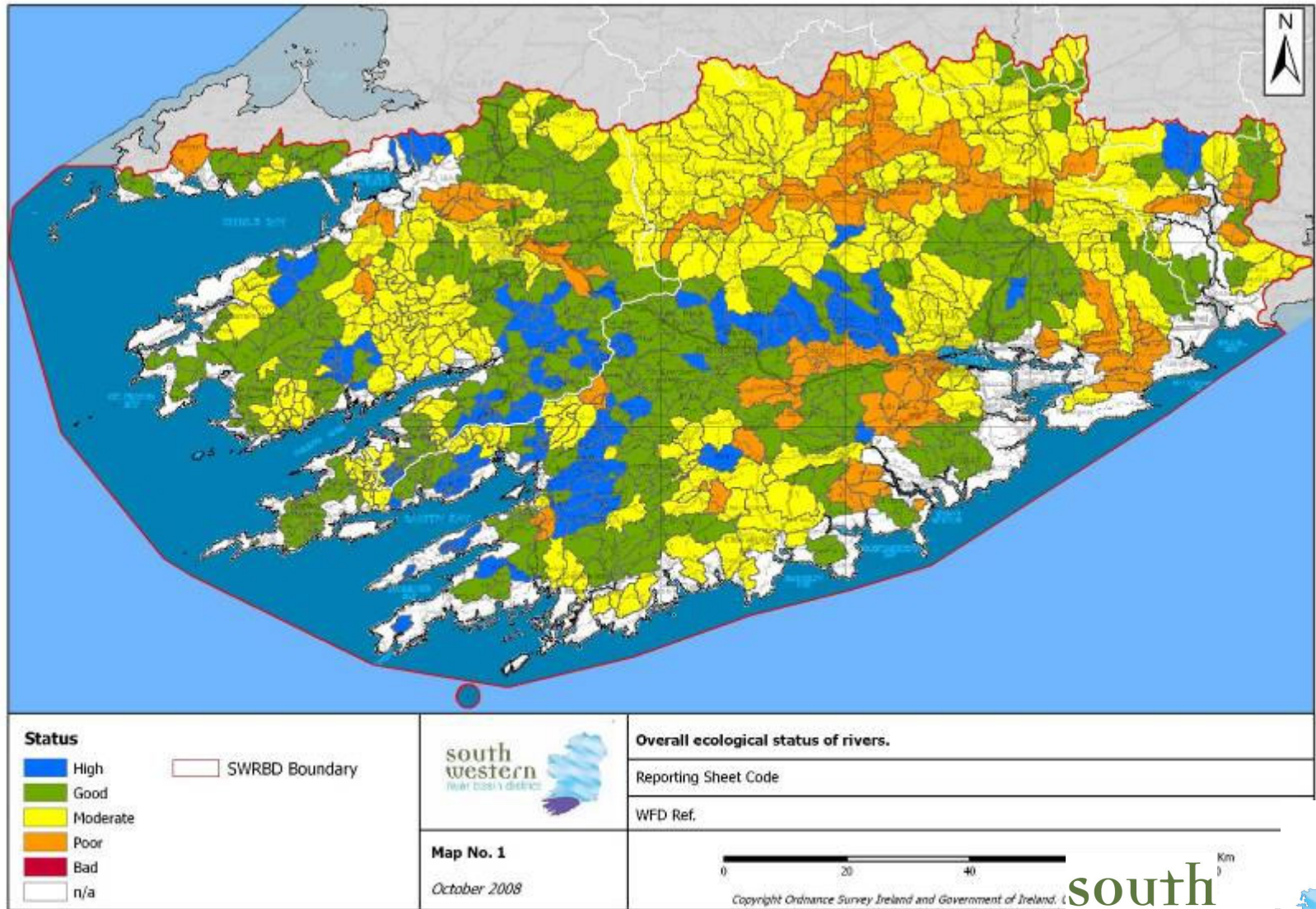
Status	Number	% by number
High	405	9
Good	1869	41
Moderate	1413	31
Poor	713	16
Bad	55	1
n/a	70	2
Total	4525	

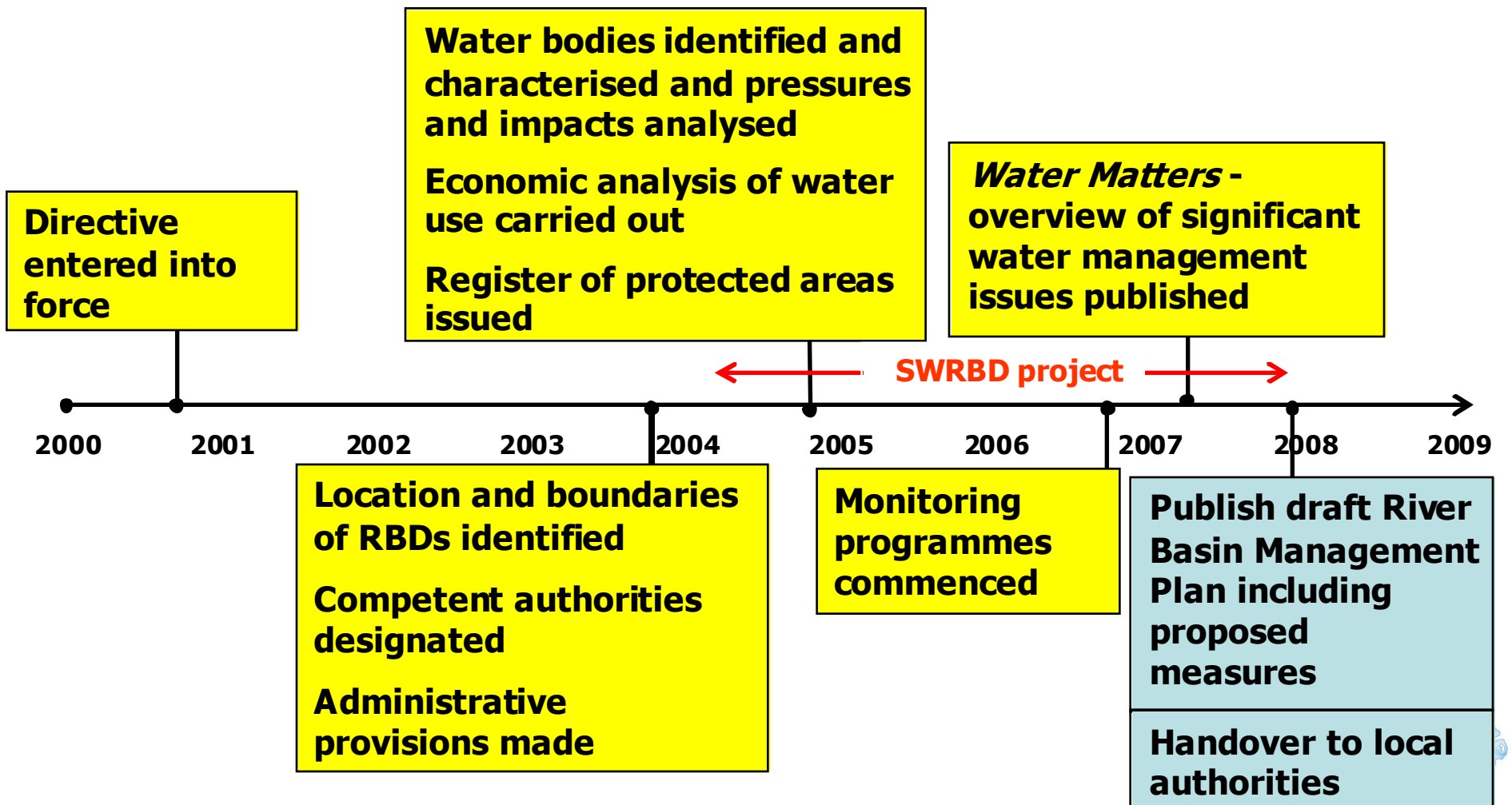


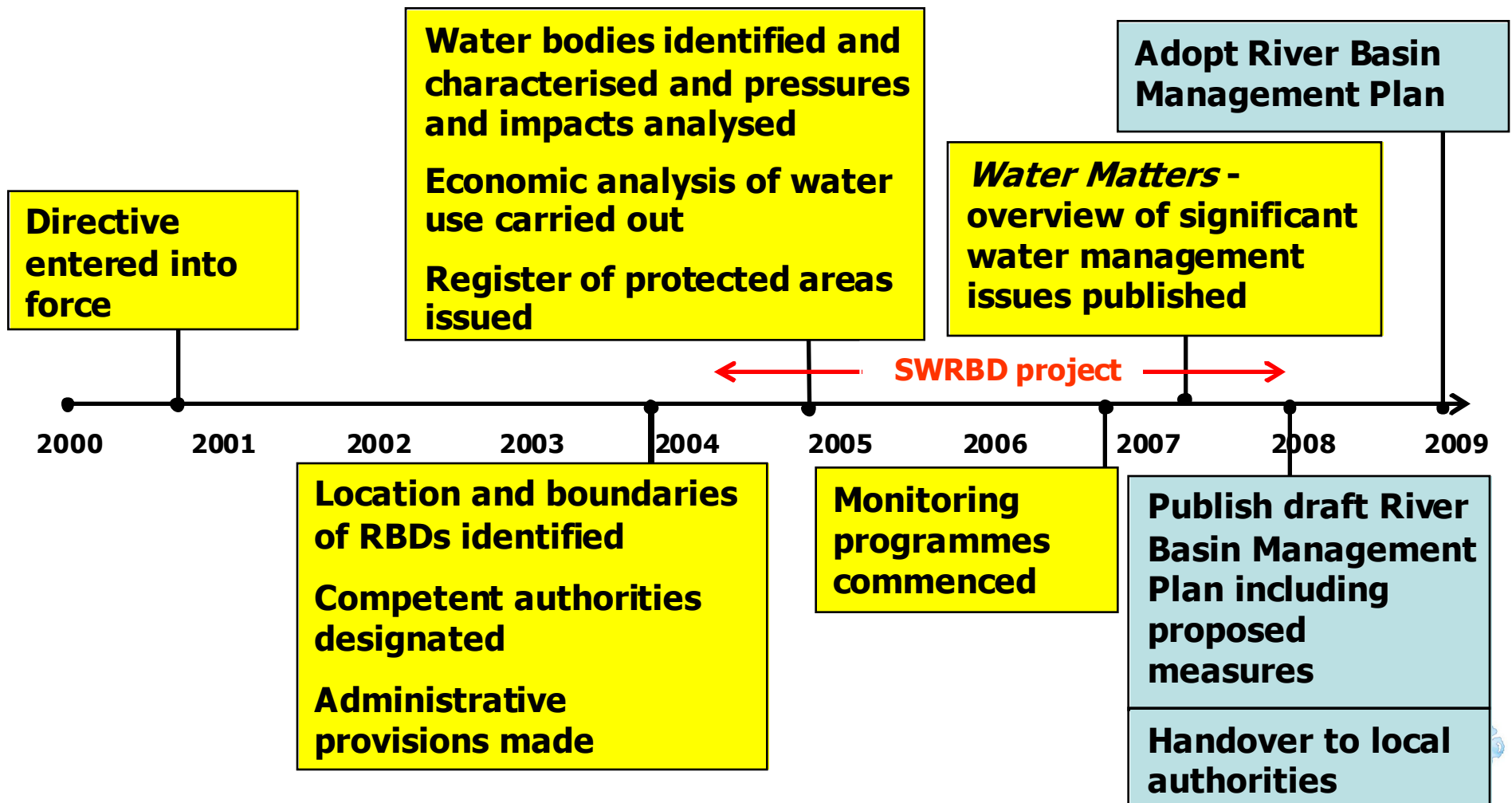
south
western
river basin district



SWRBD Ecological Status - Rivers

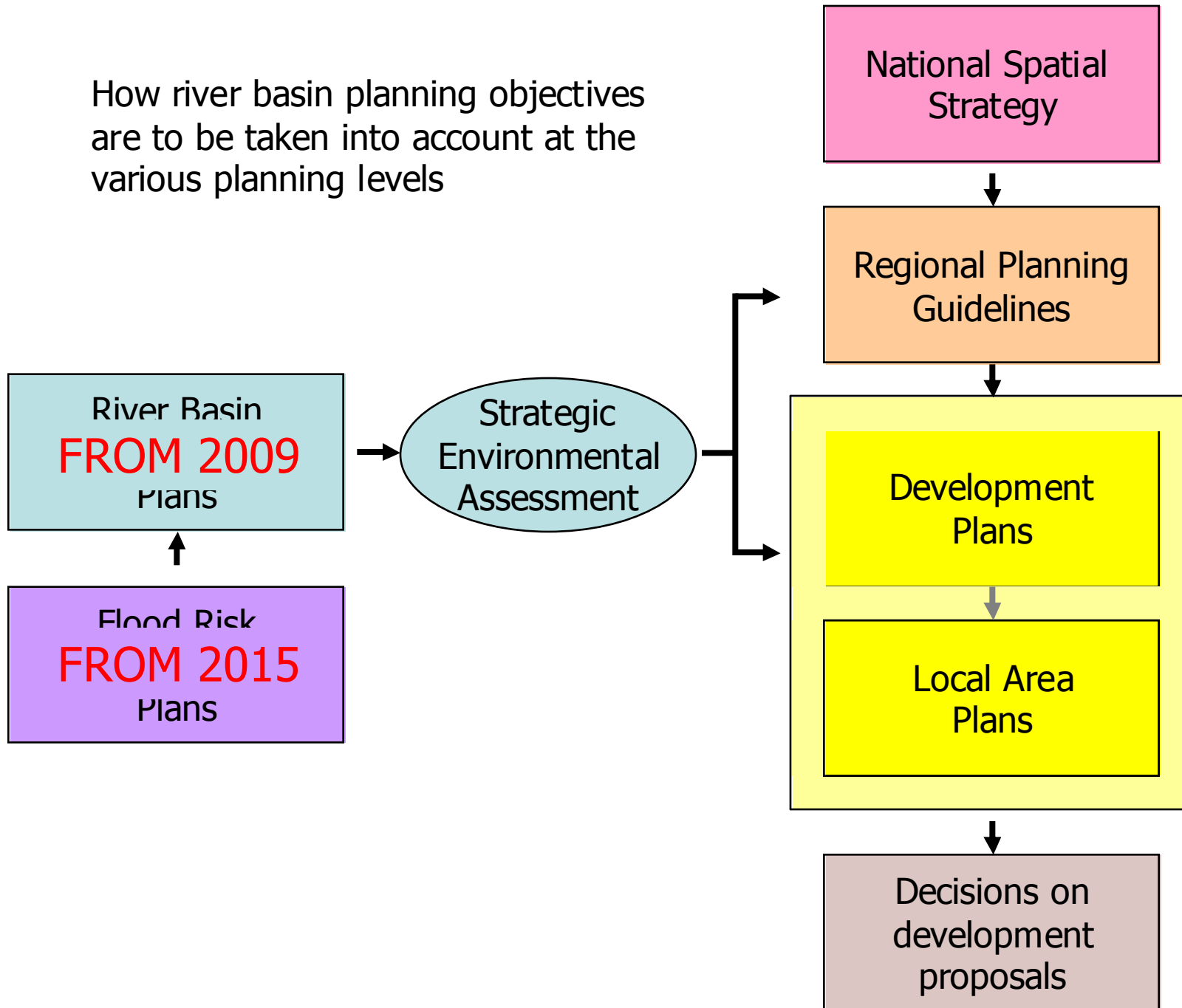






Strategic Environmental Assessment

How river basin planning objectives are to be taken into account at the various planning levels



Main Steps to SEA

Four main steps of SEA

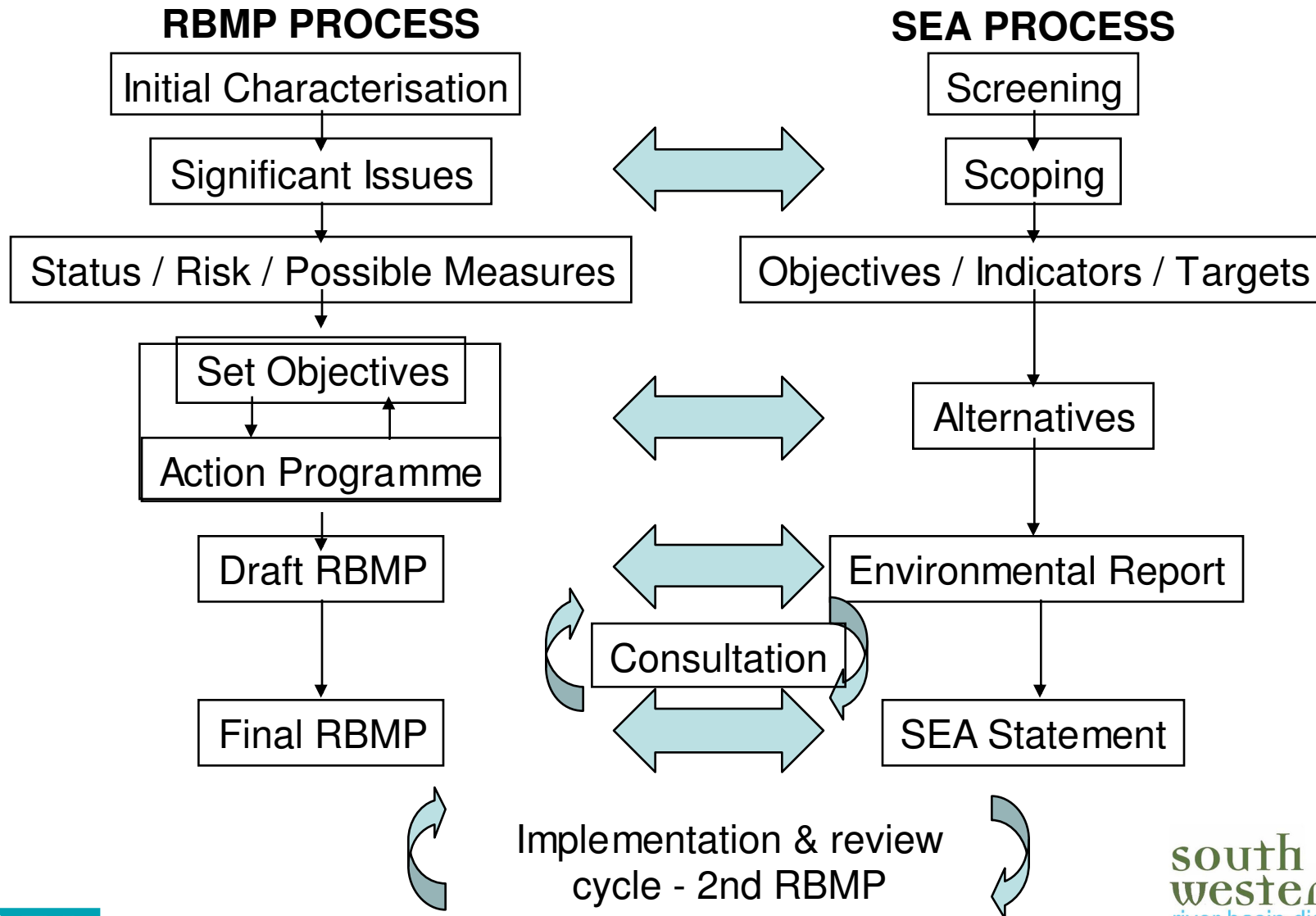
- Screening – Is an SEA needed? ✓
- Scoping – What should it include? ✓
- Environmental Assessment and Report -
Alternatives
- SEA Statement



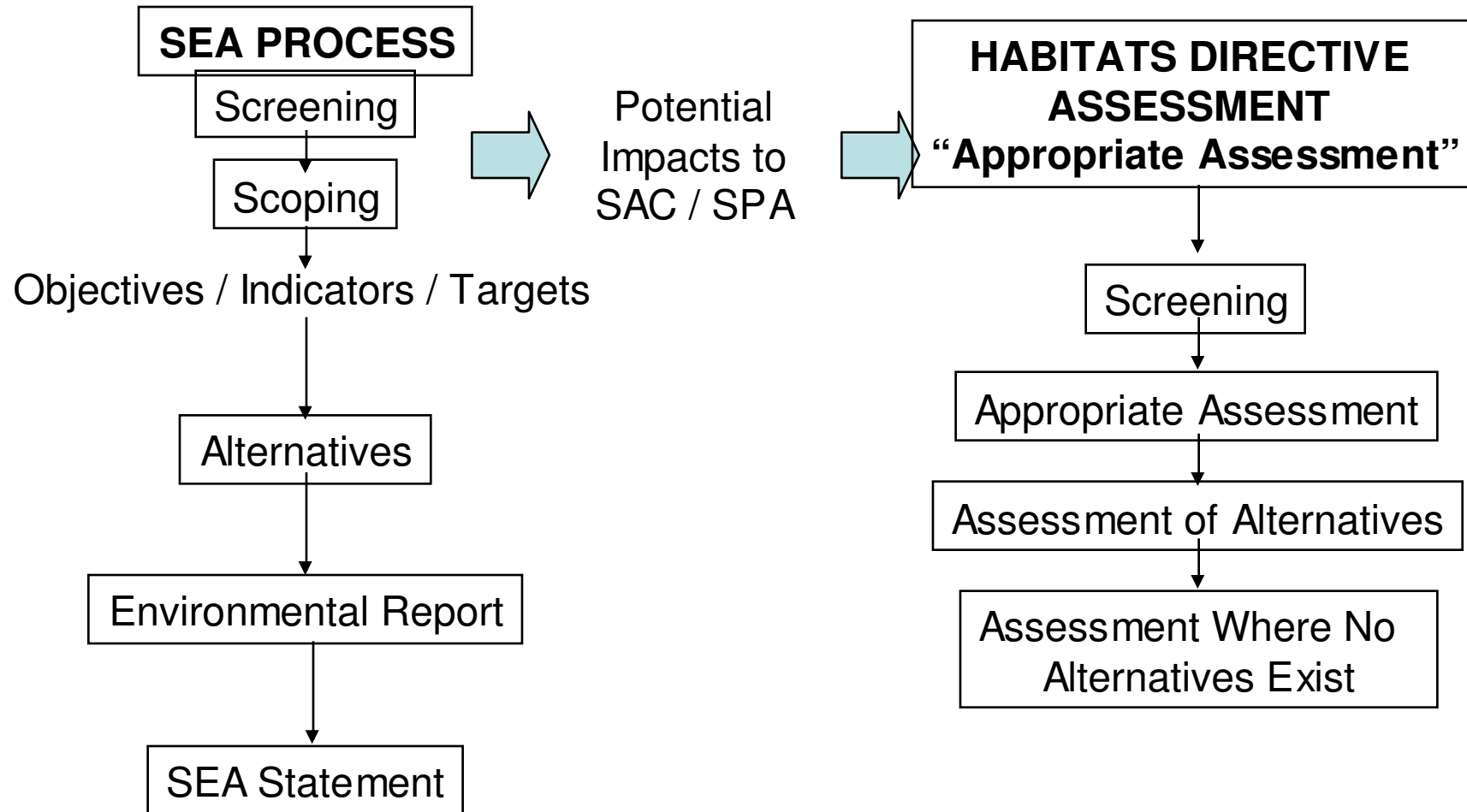
Key Issues

- River Basin Management Plans are top tier plans - driving future land use plans. They are Strategic.
- 8 Separate Plans - each with its own unique issues and needs
- Statutory Deadlines – no slippage
- Communication – critical through all stages
- Local Knowledge with Central Management
- Habitats Directive Assessment

Overall Methodology



Methodology – Habitats



Methodology

Public Consultation

- Combine with the consultation on the draft Plans
- Take advantage of established relationships from the early stages of the WFD
- Ongoing involvement of SEA team at Plan consultation to ensure awareness of all issues



Methodology

Preparation of Submission Reports

- Central review of all submissions:
 - Avoids duplication of work on general comments
 - Allows comments on one RBMP to be recognised in others
- Well established and positive working relationships between two teams will allow maximum environmental input on possible changes to Plans resulting from this process



Methodology

Preparation of SEA Statements

- Addendum to SEA Environmental Report
- Preparation of draft and final SEA statements for all 8 RBDs



DEADLINES: 22 December 2008

16 October 2009



Overview of Draft River Basin Management Plan



Overview of Draft Plan

~~Tier 1 – Working together North & South~~

Tier 2 – Main RBMP to be adopted

Tier 3 – Details of Measures to be applied at water body level

Tier 4 – Supporting Technical Documents

Overview of Draft Plan (Tier 2)

STEP 1 - What causes our water problems?

STEP 2 - How healthy are our waters?

STEP 3 - What do we plan to achieve?

STEP 4 - What actions must we take?

STEP 5 - What will basic measures achieve?

STEP 6 - What further actions must we take?

STEP 7 - What will supplementary measures achieve?

STEP 8 – Our objectives for the South Western River Basin District

STEP 9 - Our plan for the South Western River Basin District

Objectives – leading to measures for the Basin Management Plan



Objective 1

- **Enable protected areas to achieve their stricter status standards**
- Drinking Water Abstractions
- Economically significant species (shellfish)
- Recreational and bathing waters
- Nutrient sensitive areas
- Protected habitats and species (FPM) (water dependent SAC & SPA)
- Basic measures must achieve these objectives in all protected area cases by 2015 (no derogations)

Objective 1

FRESHWATER PEARL MUSSEL

- set all objectives as restore by 2015 using basic measures (FPM plans)

BATHING WATERS

- Failures – restore by 2015 using basic measures (Bathing Waters plans)
- Passes – protect by 2015 using basic measures (Bathing Waters plans)

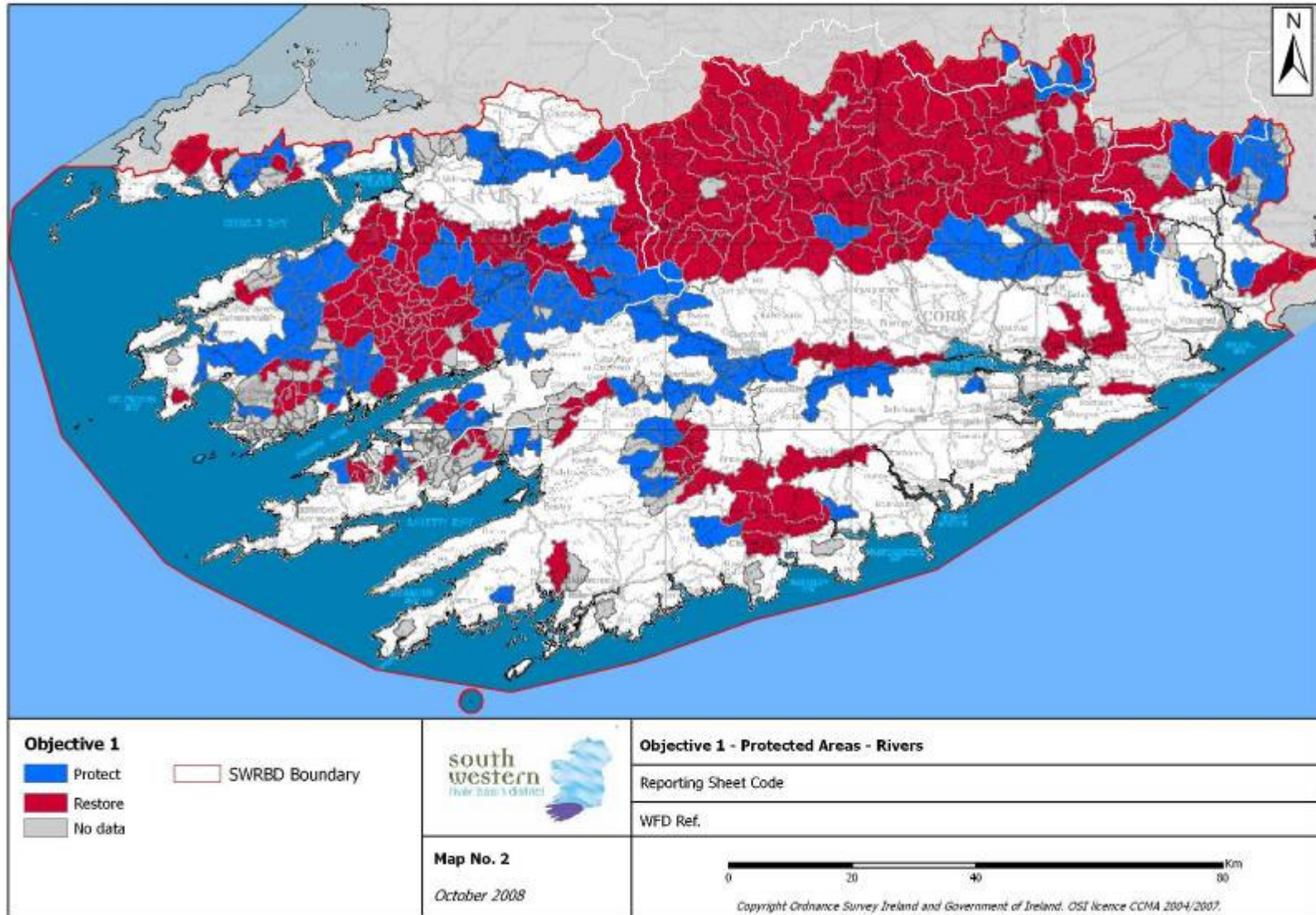


Objective 1, continued

FOR ALL OTHER PROTECTED AREA WATER BODIES

- If ecological status less than good - restore by 2015 using basic measures
(shellfish/conservation/UWWTD/drinking water plans)
- If ecological status good or better - protect by 2015 using basic measures
(shellfish/conservation/UWWTD/drinking water plans)

Objective 1 – Protected Areas - Rivers

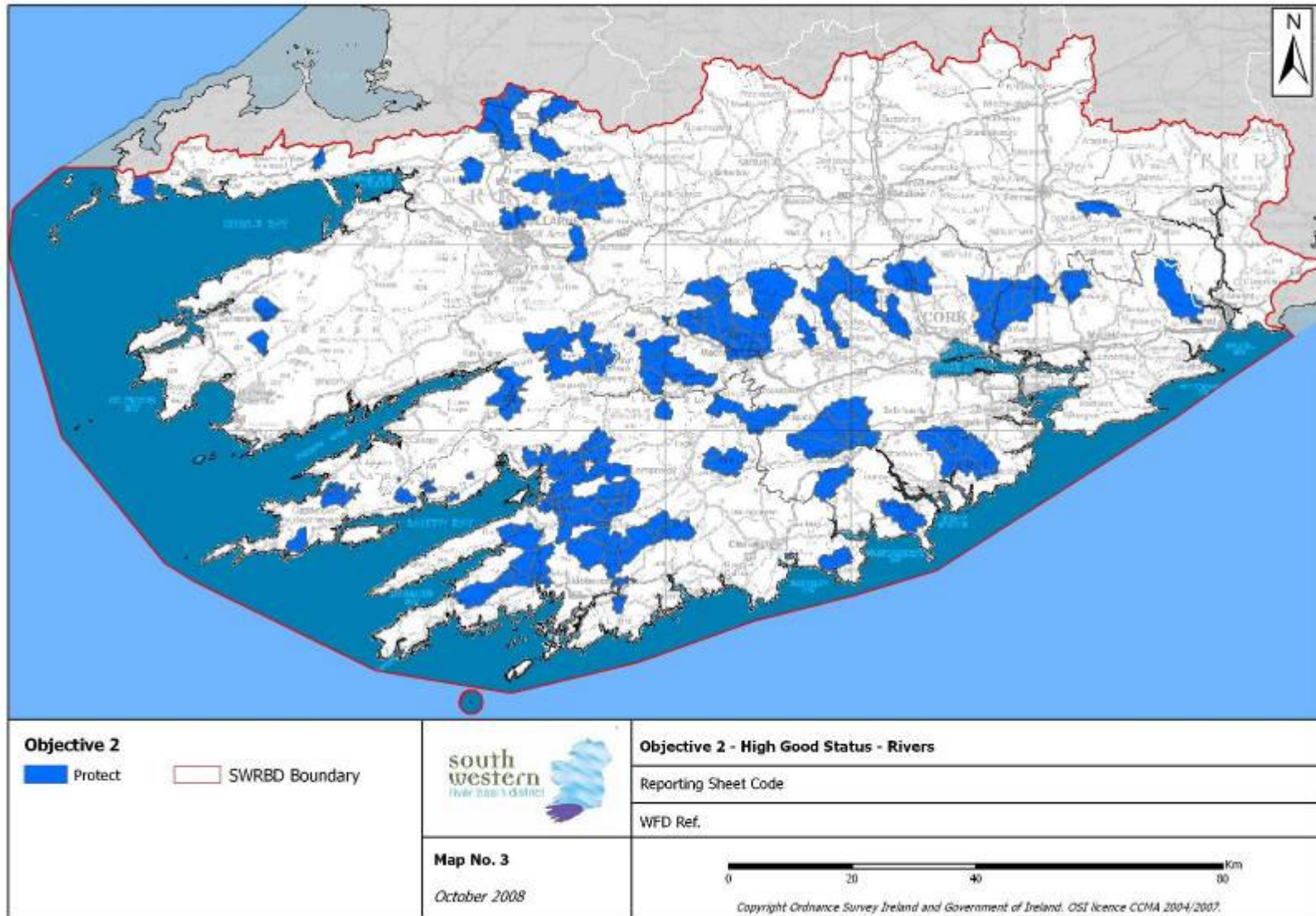


Objective 2

Prevent deterioration and, in particular, maintain high or good status

- Basic measures - entail existing / proposed prior authorisation or registration for point and diffuse source discharges, abstractions and morphology
- Provided that WFD objectives are reflected in linked plans and programmes (particularly development and land-use plans) this should provide protection against deterioration in status in all cases
- Identify High and Good sites outside protected areas
- Set all objectives as protect by 2015 using basic measures (prior authorisation of all activities)

Objective 2 – High / Good Status - Rivers

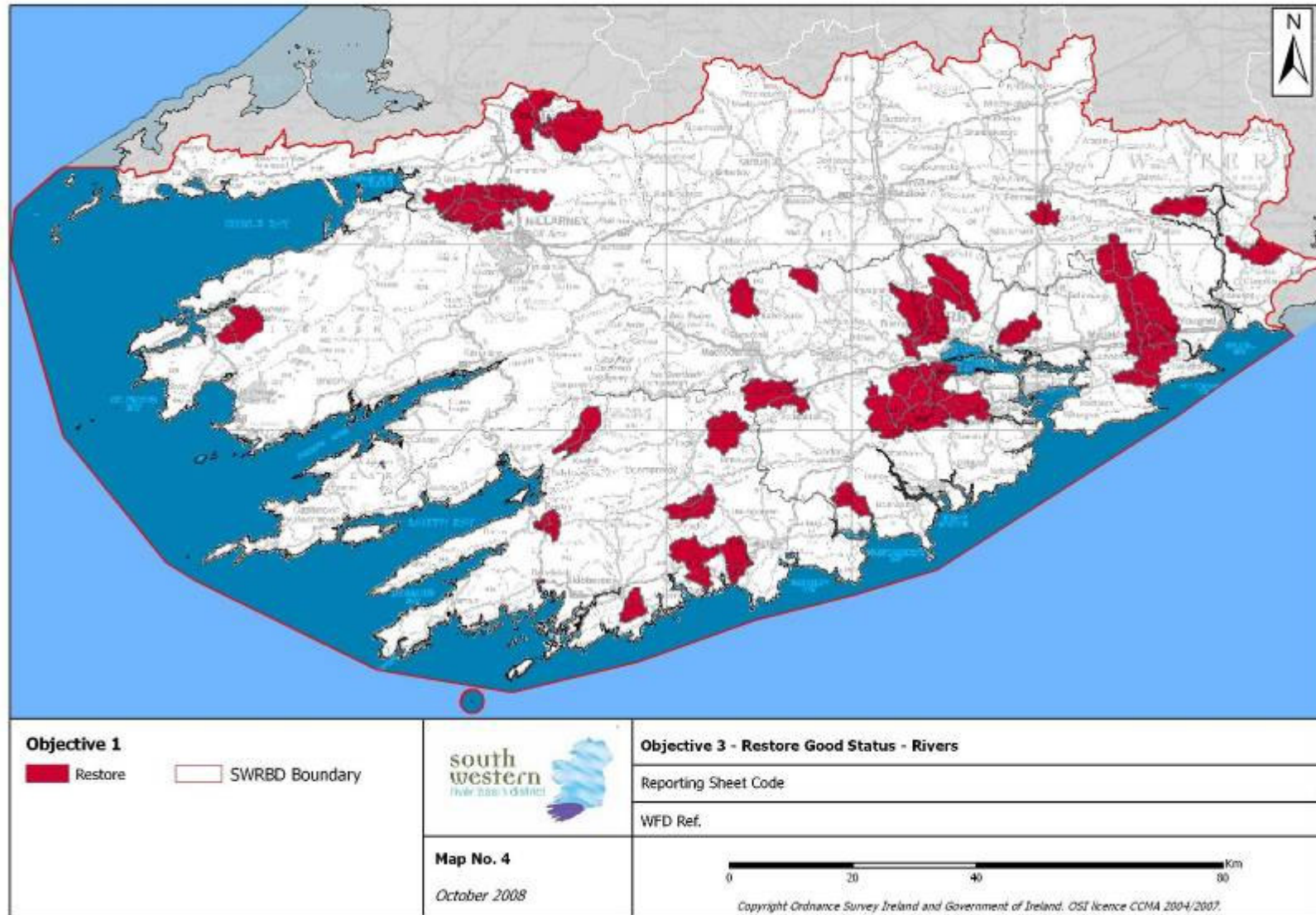


Objective 3

Improve waters where appropriate to achieve at least good standards

- The pressures will be identified from PoMS studies and risk assessments.
- Identify Moderate, Poor and Bad sites outside protected areas.
- Supplementary measures will need to be considered for our key water pressures to restore status.
- The measures must be technically feasible and cost-effective.
- Set objective as restore by 2015 using basic measures (supplementary measures to be tested for significant pressures)

Objective 3 – Restore Good Status - Rivers

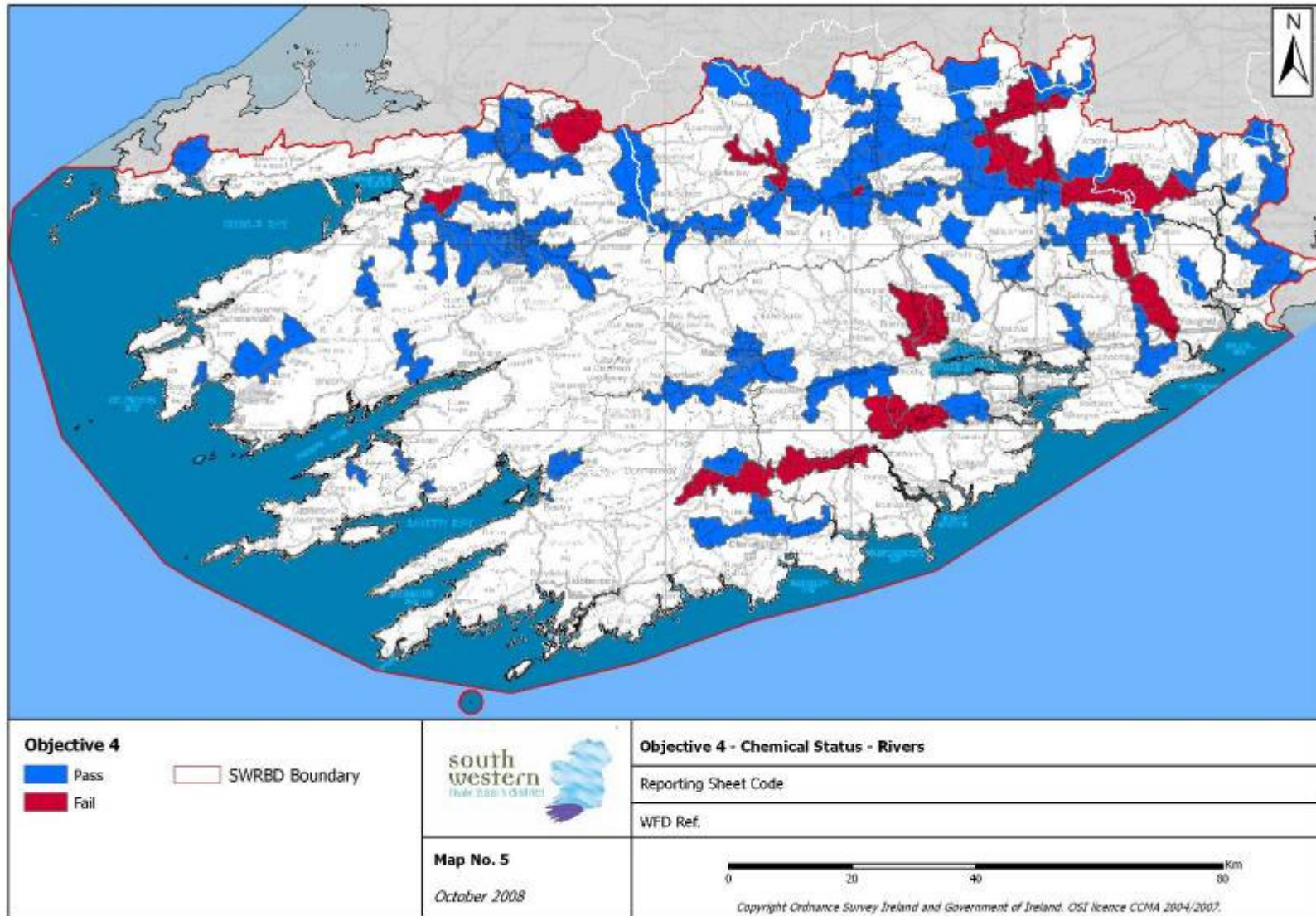


Objective 4

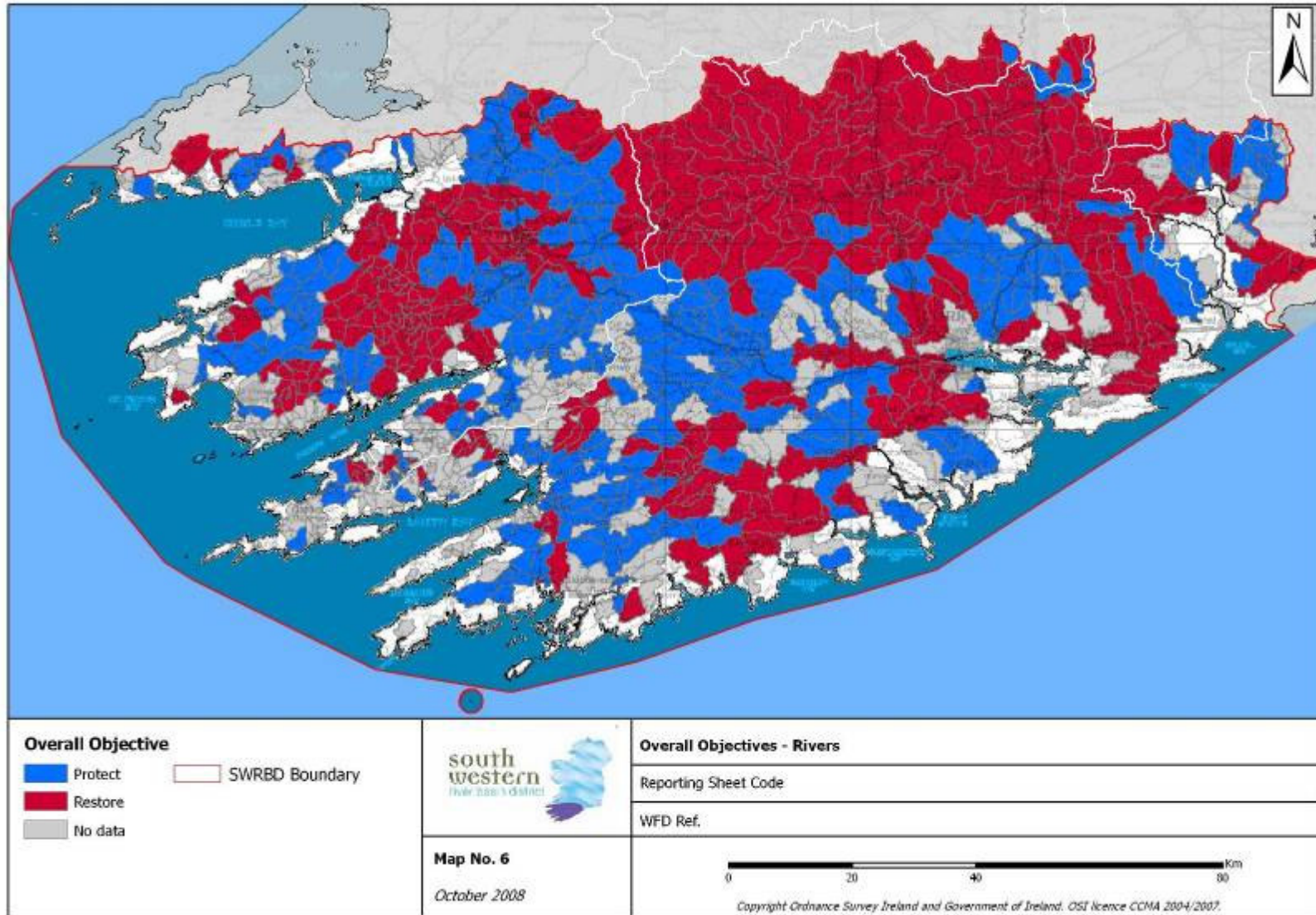
Progressively reduce chemical pollution

- Surface water and groundwater objectives requiring pollution reduction programmes
- Basic measures provide for this objective with supporting supplementary actions under the pollution reduction programmes.
- Identify chemical status failures.
- Set default case as restore by 2015? using basic measures (supplementary measures to be tested for significant pressures) – to be confirmed by EPA as more time to investigate failures may be required

Objective 4 – Chemical Status - Rivers



Overall Objective - Rivers



Actions	Type (Legislative, Economic, Voluntary, Research)	Existing	Proposed	Geographic re mit (National, RBD Wide, Water Body Targeted)
11 Basic Directives				
Bathing Water Directive (76/160/EEC)	L	√		National
Birds Directive (79/409/EEC)	L	√		National
Drinking Water Directive (80/778/EEC) as amended by Directive (98/83/EC)	L	√		National
Major Accidents (Seveso) Directive (96/82/EC)	L	√		National
Sewage Sludge Directive (86/278/EEC)	L	√		National
Urban Waste-water Treatment Directive (91/271/EEC)	L	√		National
Plant Protection Products Directive (91/414/EEC)	L	√		National
Nitrates Directive (91/676/EEC)	L	√		National
Habitats Directive (92/43/EEC)	L	√		National
Integrated Pollution Prevention Control Directive (96/61/EC)	L	√		National
Environmental Impact Assessment Directive (85/337/EEC)	L	√		National

Nine other basic measures				
Actions	Type (Legislative, Economic, Voluntary, Research)	Existing	Proposed	Geographic remit (National, RBD Wide, Water Body Targeted)
Practical steps and measures to apply the principle of recovery of costs for water use and measures to promote efficient and sustainable water use				
National Water Pricing Policy Framework (1998)	L	√		National
Measures taken to protect drinking water sources				
Possible Source Protection Zone Regs	L		√	National
Controls on abstraction and impoundment with an impact on the status of water				
New Abstraction Licensing Regulations	L		√	National
Controls on point source and diffuse source discharges with an impact on the status of water				
Water Pollution Act	L	√		National
Waste Water Discharge (Authorisation) Regulations 2007 (SI No. 684 of 2007)	L	√		National
The European Communities (Good Agricultural Practice for Protection of Waters) Regulations 2006 (S.I. No. 378 of 2006) – to be amended	L	√	√	National

Nine other basic measures

Actions	Type (Legislative, Economic, Voluntary, Research)	Existing	Proposed	Geographic re mit (National, RBD Wide, Water Body Targeted)
Authorisations of direct discharges to groundwater				
Waste Water Discharge (Authorisation) Regulations 2007 (SI No. 684 of 2007)	L	√		National
Measures to deal with priority substances				
New EQS Regulations	L		√	National
Controls on physical modifications to surface waters with an impact on the status of water				
New physical modifications regulations	L		√	National
Controls on other activities with an impact on the status of water				
Possible new Regs under Section 52(6)(a) of the Wildlife Act, 1976	L		√	National
Measures taken to prevent or reduce the impact of accidental pollution incidents				
(Control of Major Accident Hazards Involving Dangerous Substances) Regulations (SI 74 of 2006)	L	√		National

Supplementary Measures

- **Wastewater, Industry & Other Point Sources**
- Reduce loading by introduction of P free products
- Reduce collection system loading by installing sustainable urban drainage systems
- Wastewater collection system upgrade
- Wastewater treatment plant upgrade/provision
- Wastewater treatment outfall relocation
- Introduce Best Available Techniques (BAT) for industrial discharges
- Undertake remediation projects for prioritised landfills, quarries, mines and contaminated lands
- Dangerous substances – flag license review

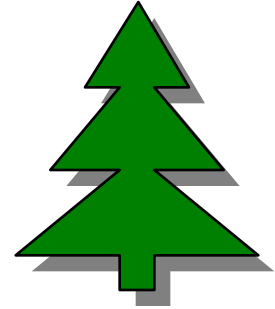


<i>Actions Under the Basic Measures</i>	
B1	Upgrade WWTP to increase capacity
B2	Upgrade WWTP to provide nutrient removal treatment
B3	Review existing Section 4 licence conditions and reduce allowable pollution load.
B4	Review existing IPPC licence conditions and reduce allowable pollution load.
B5	Put auditable procedures in place to monitor compliance of licensed discharges with licence limit
B6	Implement one or more of the following as applicable <ul style="list-style-type: none"> - Install facilities to monitor influent loading in accordance with RBD guidelines. - Keep register of plant capacity and update annually and whenever modifications are made. - Monitor receiving water quality.
B7	Investigate contributions from the collection system resulting from licensed and unlicensed discharges and revise licenses to reduce or remove specific substances in the discharge as appropriate.
B8	Optimise the performance of WWTP by the implementation of a performance management system
<i>Supplementary Measures</i>	
S1	Implement one or more of the following as applicable <ul style="list-style-type: none"> - Investigate the extent of use & impact of under-sink food waste disintegrators & introduce controls where appropriate - Investigate fats/oils/grease concentration in influent & require control systems to reduce FOG entering collection systems - Investigate further controls on phosphorus in detergents additional to the code employed by IDAPA, - Limit or cease the direct importation of materials (e.g. liquid wastes, landfill leachate, sludges, etc.) to the treatment plant.
S2	Use decision making tools in the management of point source discharges
S3	Relocate the point of discharge
S4	Apply a higher standard of treatment
S5	Upgrade the WWTP to remove specific substances known to impact on water quality status.
S6	Characteristics wastewater parameters in addition to monitoring requirements under UWWT Regs
S7	Initiate research to determine the impact of the discharge.
S8	Install secondary treatment to plants not required to do so under the existing Basic measures.
S9	Install UV or similar type treatment
S10	Control developments which result in increased loading to the WWTP

Supplementary Measures

Forestry

- To be determined



	FA 1	FA 2	FS 1	FS 2	FE 1	etc
WB/WMU	km ²					

Supplementary Measures

Unsewered Properties

- Reduce system loading by using P free products
- Targeting on-site systems inspection and de-sludging
- Targeting on-site systems inspection and upgrade
- Connection of areas to municipal systems



Supplementary Measures

Morphology

- Establish a code of practice for physical modifications
- Reduce morphology pressures and allow the system to re-naturalise
- Targeting channelisation, barrier and over-grazing restoration schemes
- Support for existing voluntary initiatives such as wetlands and ICZM schemes.



	MC 1	MC 2	MO 1	MB 1	MB 2	etc
WB/WMU	km					

Microsoft Excel - Stats per RBD.xls

File Edit View Insert Format Tools Data Window Help

Type a question for help

Arial 10 B I U

B1 Total No. River Waterbodies (Incl X Border)

A	D	F	H	J	K	L	M
RBD	No. River Waterbodies at risk due to channelisation and/or embankments	Total Length of River at Risk due to Channelisation and/or Embankments (km)	Length of Rivers within At Risk Waterbodies that are Confirmed Suitable for River Enhancement Schemes (slope and pollution info) (km)	Length of Unconfirmed Suitable Rivers within At Risk Waterbodies (no pollution info) (km)	No. At Risk Waterbodies with Fish and Q Status to Confirm Morph Impact	No. At Risk Waterbodies Containing Confirmed Suitable Rivers with Fish and Q Status to Confirm Morph Impact	Length of At Risk Confirmed Suitable Rivers Within Waterbodies with Fish and Q Status to Confirm Morph Impact
1							
2	ERBD	94	1336	28	602	2	0
3	NWRBD	32	335	19.7	131	0	0
4	WRBD	151	1765	197	630	8	9.3
5	SWRBD	11	74	2.6	45	0	0
6	SHRBD	231	2931	98.6	1505	3	4.5
7	SERBD	42	459	2.4	193	0	0
8	NBIRBD	36	643	4.6	393	0	0
9	(Totals)	597	7543	352.9	3499	13	13.8
10							
11							
12							
13	Confirmed Suitable = Suitable Slope and Pollution						
14	Unconfirmed = Slope Suitable but no pollution info						
15							
16							
17							
18							
19							
20							
21							
22							
23							
24							
25							


Sheet1 / Sheet2 / Sheet3

Ready Sum=149644 NUM

start Microsoft Po... 5670.00 SEA ... WBmeasures ... STATUS.xls Stats per RB... 07:35

Supplementary Measures

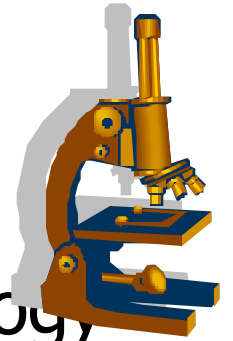
Abstractions

- Establish a code of practice for abstraction and water conservation
- Support for voluntary initiatives such as water conservation and rainwater harvesting schemes 
- Remediation schemes in priority areas including considering reducing current abstractions by; altered abstraction timing, conjunctive use, additional storage or alternative sources.

Supplementary Measures

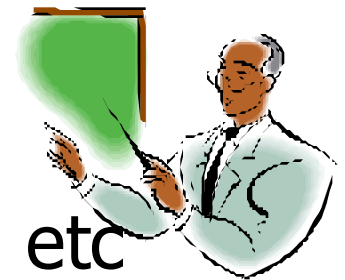
Research

- Characterisation of effluents and leachates
- Establishing natural background levels in waters
- Establishing links between ecology and morphology,
- Establishing links between ecology and abstractions including flow requirements to support fish.



Education Campaigns

- National awareness campaign
- Dangerous substances awareness / labelling etc
- Morphology awareness of pressures.



Post Project Arrangements



Post project arrangements

Issues

- Disbanding of Advisory Council, SPCs and Councils in May 2009 during consultation period on draft Plan
- No consultancy support for public consultation
- Need for RBD office



Task	Timetable for Publication of River Basin Management Plans																		
	2008							2009											
	Jun	Jul	Aug	Sept	Oct	Nov	Dec	Jan	Feb	Mar	Apr	May	Jun	Jul	Aug	Sept	Oct	Nov	Dec
Issue of revised regulations for RBMPs by DEHLG	■											■	■	■	■				
Publication of Water Status Classification by EPA		■										■	■	■	■				
Preparation of draft RBMP template		■	■	■	■							No meetings of County or City Councils during this period							
Send to Public Authorities					■							No meetings of County or City Councils during this period							
Present to RBDACs					■	■	■					■	■	■	■				
Present to SPCs and County and City Councils					■	■	■					■	■	■	■				
Publish Draft RBMP by 22/12/08							■					■	■	■	■				
Consultation on Draft RBMP to 22/06/09							■	■	■	■	■	■	■	■	■				
Amendments to Draft RBMP												■	■	■	■				
Making of RBMP by County and City Councils by 16/10/09												■	■	■	■	■	■		
Making of RBMP by County and City Managers by executive function, if required by 30/10/09												■	■	■	■			■	
EPA Report to Minister												■	■	■	■			■	
Minister may amend RBMP, as he considers appropriate												■	■	■	■				■
Publication of RBMP												■	■	■	■				■

Post project arrangements

DEHLG

- Contracts cannot be extended due to procurement restrictions
- Recognise need for consultancy support
- Propose one consultant nationally
- Will support project staff, i.e. co-ordinator and GIS officer up to June 2010

